

# BlueCat

Lumeta can now exchange data with a BlueCat Address Manager (BAM) connected to a BlueCat Gateway. (BG)

## Prerequisite

A BlueCat Gateway server has already been installed at your workplace.

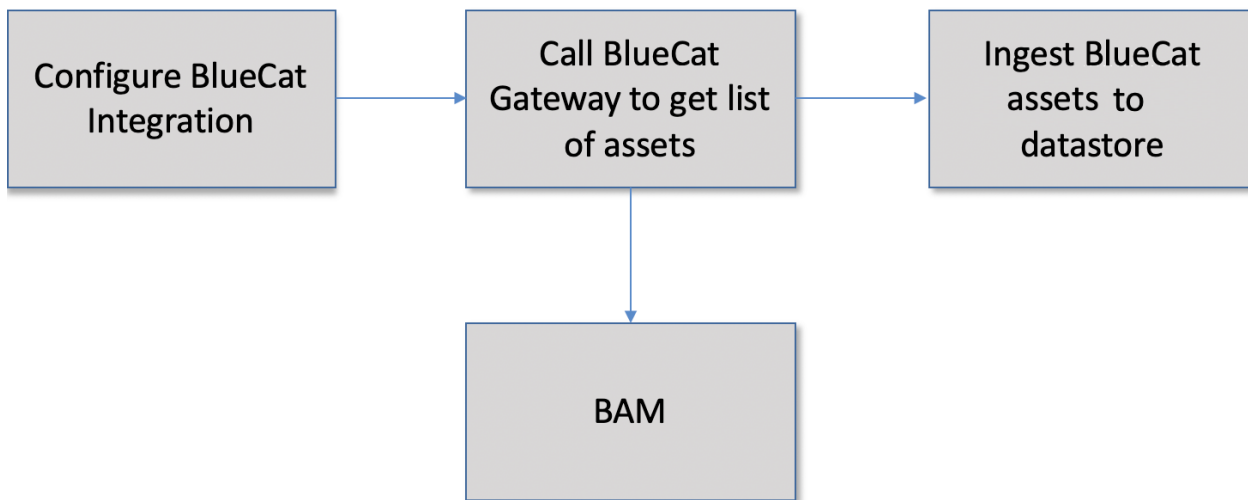
## Process

1. [Configure the BlueCat Integration in Lumeta](#)
2. [Install the Lumeta plug-in on the BlueCat gateway server](#)
3. [Review the results on the BlueCat Management dashboard.](#)

## About Integration

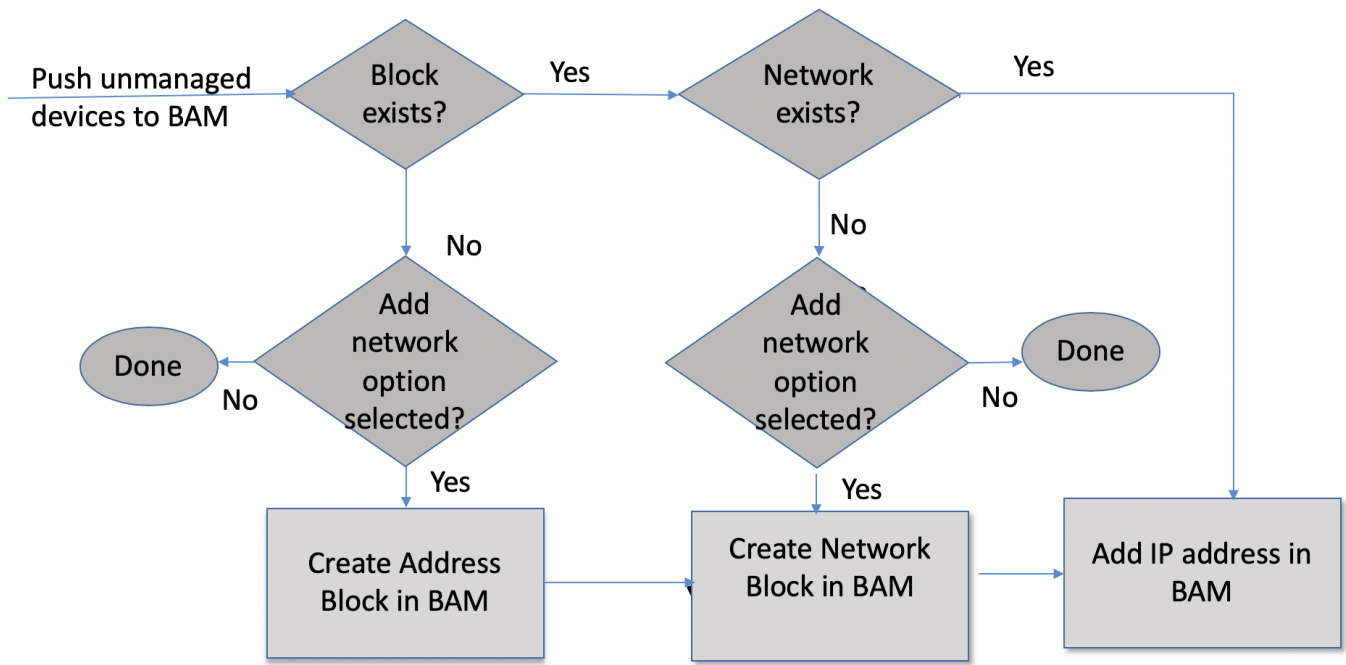
1. Lumeta authenticates against the BlueCat Gateway (BC) and retrieves all results via this gateway. Lumeta does not communicate directly with the BlueCat Address Manager (BAM) server
2. Address blocks with /30 (for IPv4) and /32 are added to BAM when the "add unmanaged devices with no network block defined" option has been selected and BAM does not already have an address block containing the IP address.
3. Network blocks with /32 (for IPv4) are added to BAM when the "add unmanaged devices with no network block defined" option has been selected and BAM does not already have an address block containing the IP address.

## High Level Flow Design



1. Lumeta pulls list of networks from BAM
2. For each configured network, Lumeta calls REST APIs against Gateway to retrieve list of IPv4 addresses. Those addresses are ingested into a managed primary table on Lumeta called bluecat\_managed\_hosts.
3. Lumeta analyzes the data and identifies devices in each selected zone (provided the Asset Mapping by Zone checkbox is selected).
4. Lumeta populates the BlueCat Management dashboard.
5. Lumeta calls the BlueCat Gateway API to create these devices in BAM under a selected configuration.

## Logic to Create Assets in BAM



### Gateway Workflow API details:

Purpose	API	Payload	Response
Gateway Authentication	<a href="https://172.18.1.123/rest_login">https://172.18.1.123/rest_login</a> <pre>curl -v -H "Accept: application/json" -H 'Content-type: application/json' -d@creds.json -k -X POST 'https://172.18.1.123/rest_login'</pre>	<pre>{   "username":   "gateway",   "password":   "admin" }</pre>	<pre>{   "access_token": "BAMAuthToken: cdnGuMTU3Mjk5MDkyODI0OTpnYXRld2F5" }</pre>
Get list of networks/configurations	<pre>lumeta /getnetworklist</pre> <pre>curl -X GET \   https://172.18.1.123/lumeta/getnetworklist \   -H 'Accept: application/json' \   -H 'Auth: Basic I6vp7MTU3Mjg4MjM2NzU5NjpnYXRld2F5'</pre>	None	<pre>[{"id":100880,"name":"Somerset","type":"Configuration","properties":null}]</pre>

<p>Get list of devices</p>	<pre>lumeta /getiplist \  It retrieves devices for all networks  curl -X GET \   https://1 72.18.1.123 /lumeta /getiplist \ -H 'Accept: application /json' \  -H 'Auth: Basic O2MsBMTU3Mj g4NTI2MDUwM DpnYXRld2F5 ' \</pre>	<p>None</p>	<pre>[{"config_id":100880,"config_name":"Somerset","id":100895,"ip_address":"172.18.1.1","properties":{"address":"172.18.1.1","locationCode":"US MOO","locationInherited":"true","state":"GATEWAY"}},{"config_id":100880,"config_name":"Somerset","id":100901,"ip_address":"172.18.1.37","properties":{"address":"172.18.1.37","locationCode":"US MOO","locationInherited":"true","state":"STATIC"}},{"config_id":100880,"config_name":"Somerset","id":100902,"ip_address":"172.18.1.42","properties":{"address":"172.18.1.42","locationCode":"US MOO","locationInherited":"true","state":"STATIC"}}]</pre>
----------------------------	---	-------------	---

<p>Add list of devices</p>	<pre> http://172.18.1.123/lumeta/addiplist  curl -X POST \   http://172.18.1.123/lumeta/addiplist \   -H 'Accept: application/json' \   -H 'Accept-Encoding: gzip, deflate' \   -H 'Authorization: Basic AFJ9RMTU3NDQ0NjEzMDY0NjpnYXRld2F5' </pre>	<p>array of configuration with each configuration containing list of devices that need to be added</p> <pre> [{"config_name": "Somerset",   "add_network_block": true,   "deviceList": [     {       "ip": "10.28.1.14",       "mac": "00:20:58:ae:05:a5",       "family": "4"     },     {       "ip": "10.28.1.39",       "mac": "",       "family": "4"     }   ],   "config_name": "Dallas",   "add_network_block": true,   "deviceList": [     {       "ip": "10.28.1.21",       "mac": "00:20:59:ab:05:a5",       "family": "4"     },     {       "ip": "10.28.1.59",       "mac": "",       "family": "4"     }   ] } ] </pre>	<pre> {   "Dallas": {     "added_ips": 0,     "dup_ips": 2   },   "Somerset": {     "added_ips": 0,     "dup_ips": 2   } } </pre>
----------------------------	--	--	---