

# Managing Command Centers in the Portal

Follow these procedures to manage Portal connections from the Portal GUI. See [Connecting Portal Components via CLI](#) for procedures via the CLI.




You must be a [superuser](#) to attach Command Centers to the Portal, or delete them from the Portal.

## Attaching a Command Center

To attach a Command Center:

1. In the Portal, browse to **Settings > Lumeta Systems**.
2. Click **Add Command Center** (i.e., the green Plus icon).
3. Complete the form.
  - a. Label text entered in the Add A Command Center form will display in the browser tab when the Command Center is selected in Read-Only mode (left click on Command Center icon) or and in CBA/Client Based Access mode (right click on Command Center icon).

### Add A Command Center

System Name or IP Address	<input type="text" value="10.9.0.198"/>
Label	<input type="text" value="FA-ESI-CC"/>
Latitude	<input type="text" value="-17.637495"/>
Longitude	<input type="text" value="-149.423733"/>
Upload Command Center Icon	<div style="border: 1px dashed green; padding: 5px;"><p>esi space logo.jpg Type: image/jpeg, Size: 6.5 kB</p></div>

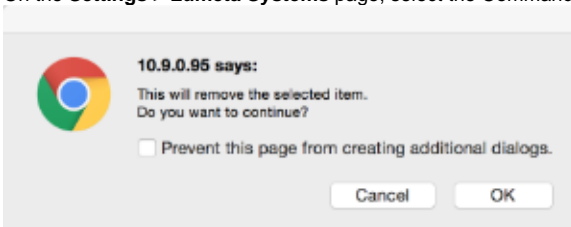
Your image will be resized to fit into a square.

1. An icon corresponding to your newly attached Command Center displays in the Portal Map of Lumeta systems.

## Detaching a Command Center

At least one Command Center must be present in the Portal. The last Command Center cannot be deleted. To detach a Command Center from the Portal, follow this procedure:

1. On the **Settings > Lumeta Systems** page, select the Command Center you would like to delete.



2. Click **OK**.  
The Command Center is deleted.